

## LAMC Institution-Set Standards

Recent changes in federal/ACCJC guidelines have created the need for colleges to establish institution-set standards related to student achievement. The ACCJC defines a “standard” as the level of performance set by the institution to meet educational quality and institutional effectiveness expectations. In this manner, these standards serve as a point at which the college evaluates whether it is meeting expected levels of achievement (i.e., rather than a target or goal we aspire to meet, they represent a level below which the institution regards its performance as unacceptable). It is the expectation of the ACCJC that standards be established for course success, persistence, degree completion, certificate completion, and transfer to 4-year colleges/universities (course retention was additionally included by LAMC because it is an achievement measure that is typically considered along with course success). Council of Instruction members evaluated previous performance on these student achievement outcomes for each of the past five years and developed the institution-set standards below. As a basis for setting the standards, the 5-year trends, 5-year minimum, 5-year average, 95% of the 5-year average, and LACCD overall performance (where available) were considered for each measure, and then a discussion was had about what a reasonable and acceptable standard would be. These suggested standards from Council of Instruction were discussed and reviewed by EPC, and on 12/2/2013 EPC recommended that the proposed standards be forwarded without any changes to the Academic Senate for approval. The Academic Senate approved the proposed standards (as-is) on 12/5/2013, and the standards received final approval from the College Council on 12/19/2013.

### **Standards:**

**1. Institution-set standard for successful course completion rate:**

Successful course completion rate equals the number of students who receive a successful grade (A, B, C, or P) over the number of students who were enrolled in the course at census.

Fall 2008	Fall 2009	Fall 2010	Fall 2011	Fall 2012	<b>Approved Standard</b>
62.9%	66.2%	67.5%	69.2%	69.2%	<b>64.0%</b>

**2. Institution-set standard for course retention rate (the extra one included by LAMC):**

Course retention rate equals the number of students who remain in the course after the no penalty drop date (i.e., did not drop the course) over the number of students who were enrolled in the course at census.

Fall 2008	Fall 2009	Fall 2010	Fall 2011	Fall 2012	<b>Approved Standard</b>
84.3%	88.3%	87.2%	88.0%	87.6%	<b>85.0%</b>

**3. Institution-set standard for persistence rate:**

Persistence rate equals the number of students who completed a course in the fall and enrolled in a course the following fall.

Fall 2007- Fall 2008	Fall 2008- Fall 2009	Fall 2009- Fall 2010	Fall 2010- Fall 2011	Fall 2011- Fall 2012	<b>Approved Standard</b>
48.4%	48.5%	48.9%	48.6%	52.6%	<b>48.0%</b>

**4. Institution-set standard for student degree completion:**

2008-2009	2009-2010	2010-2011	2011-2012	2012-2013	<b>Approved Standard</b>
405	387	426	472	657	<b>450</b>

**5. Institution-set standard for student certificate completion:**

2008-2009	2009-2010	2010-2011	2011-2012	2012-2013	<b>Approved Standard</b>
169	151	153	239	356	<b>214</b>

**6. Institution-set standard for student transfer to 4-year colleges/universities:**

2007-2008	2008-2009	2009-2010	2010-2011	2011-2012	<b>Approved Standard</b>
271	279	194	253	310	<b>205</b>

Proposed standards developed by LAMC Council of Instruction – 11/6/2013

Proposed standards reviewed/discussed by EPC and forwarded to the Academic Senate – 12/2/2013

Proposed standards approved by Academic Senate – 12/5/2013

Standards approved by College Council – 12/19/2013

## Institution-Set Standards

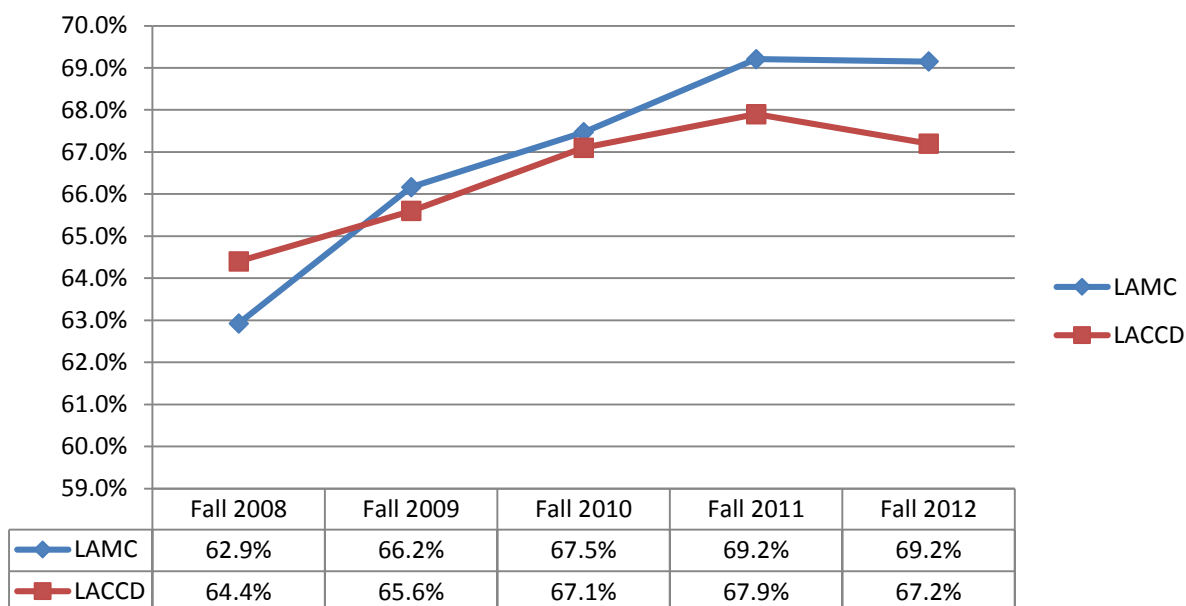
Recent changes in federal/ACCJC guidelines have created the need for colleges to establish institution-set standards related to student achievement.

Definition (from ACCJC 2013 Annual Report): A “standard” is the level of performance set by the institution to meet educational quality and institutional effectiveness expectations. This number may differ from a performance improvement “goal” which an institution may aspire to meet.

### 1. Institution-set standard for successful course completion rate:

Successful course completion rate equals the number of students who receive a successful grade (A, B, C, or P) over the number of students who were enrolled in the course at census.

### Successful Course Completion



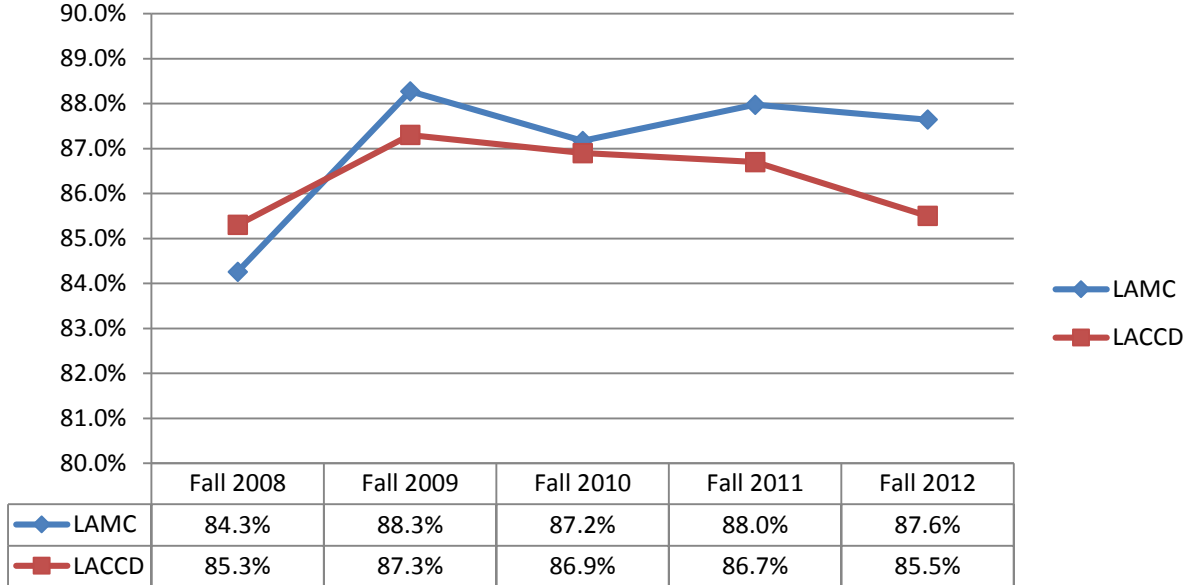
	5-Year Average	5-Year Minimum	95% of 5-Year Average
LAMC	67.0%	62.9%	63.7%
LACCD	66.4%	64.4%	63.1%

See **Appendix A.** for successful course completion rates by discipline.

### 2. Institution-set standard for course retention rate:

Course retention rate equals the number of students who remain in the course after the no penalty drop date (i.e., did not drop the course) over the number of students who were enrolled in the course at census.

## Course Retention



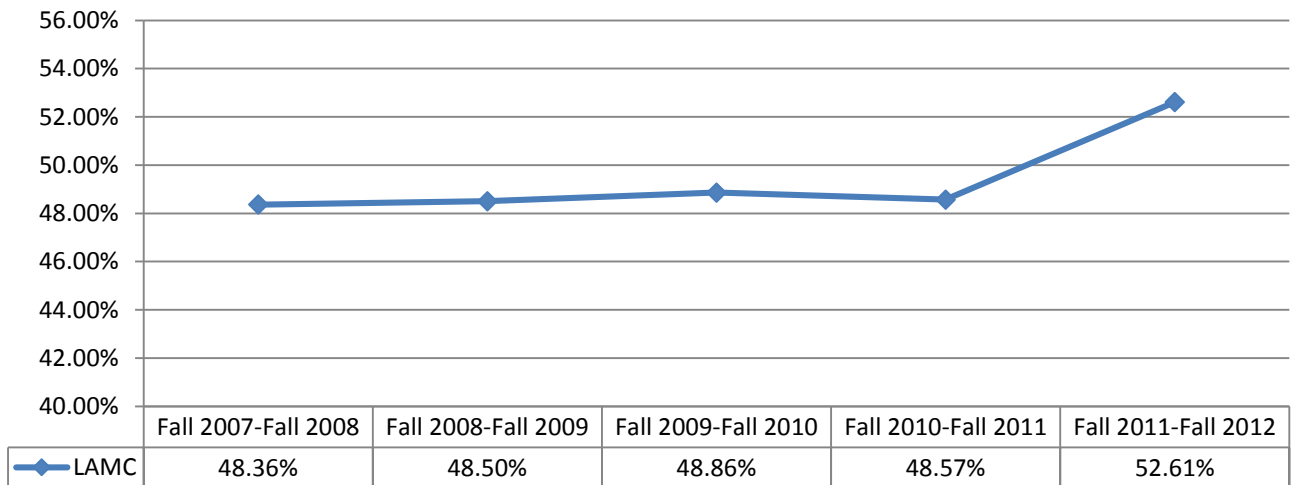
	5-Year Average	5-Year Minimum	95% of 5-Year Average
LAMC	87.1%	84.3%	82.8%
LACCD	86.3%	85.3%	82.0%

See **Appendix B.** for course retention rates by discipline.

### 3. Institution-set standard for persistence rate:

Persistence rate equals the number of students who completed a course in the fall and enrolled in a course the following fall.

## Fall-to-Fall Persistence

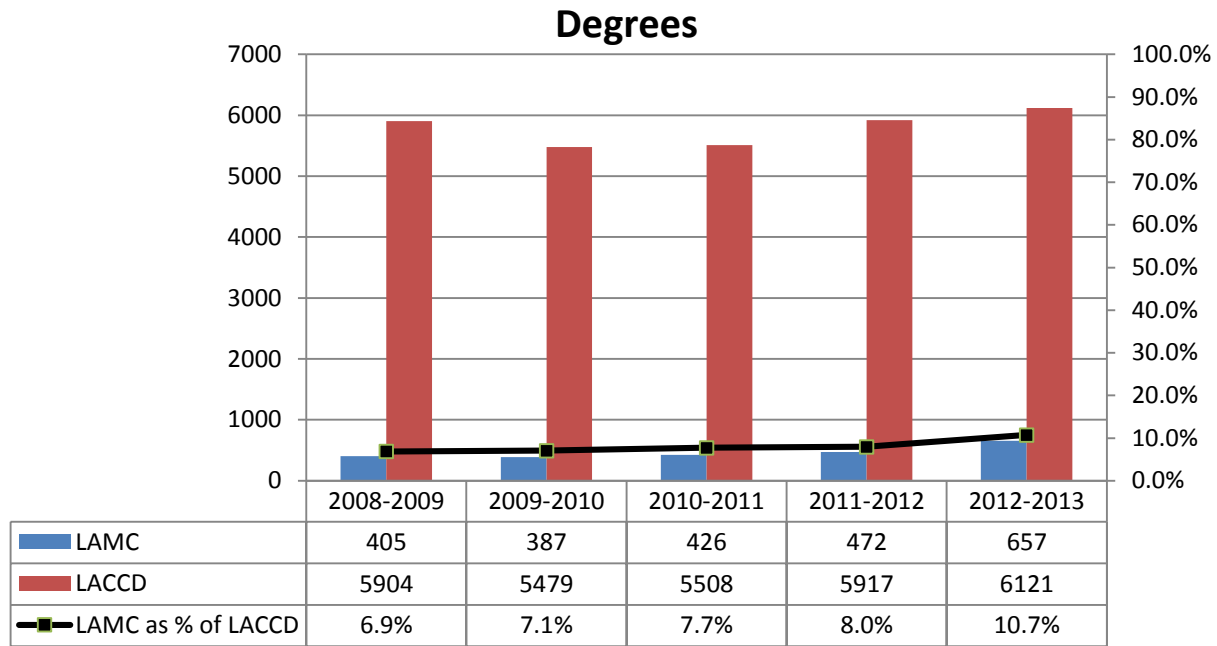


	5-Year Average	5-Year Minimum	95% of 5-Year Average
LAMC	49.4%	48.4%	46.9%

See **Appendix C.** for LACCD-calculated persistence rates based on the LACCD's definition of persistence.

**4. Institution-set standard for student degree completion:**

Student degree completion can be given as a percentage or number.



**5-Year Average    5-Year Minimum    95% of 5-Year Average**

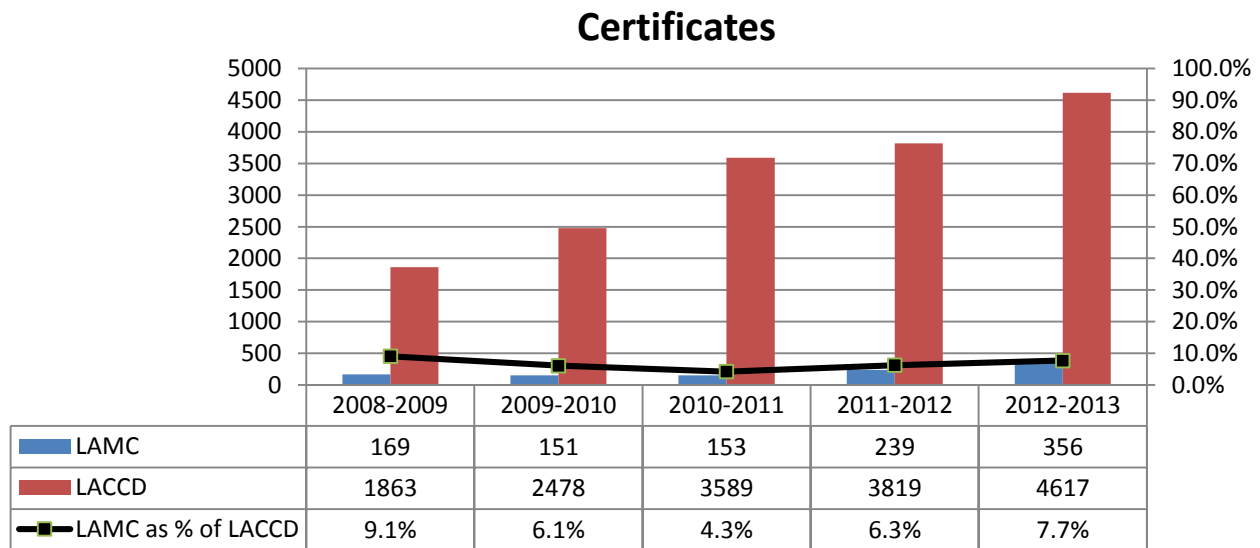
**LAMC            469.4                            387                                    445.9**

See **Appendix D.** for the number of degrees awarded each year by title.

See **Appendix E.** for degree attainment rates of new, first-time students in three and six years.

**5. Institution-set standard for student certificate completion:**

Student certificate completion can be given as a percentage or number.



**5-Year Average    5-Year Minimum    95% of 5-Year Average**

**LAMC            213.6                            151                                    202.9**

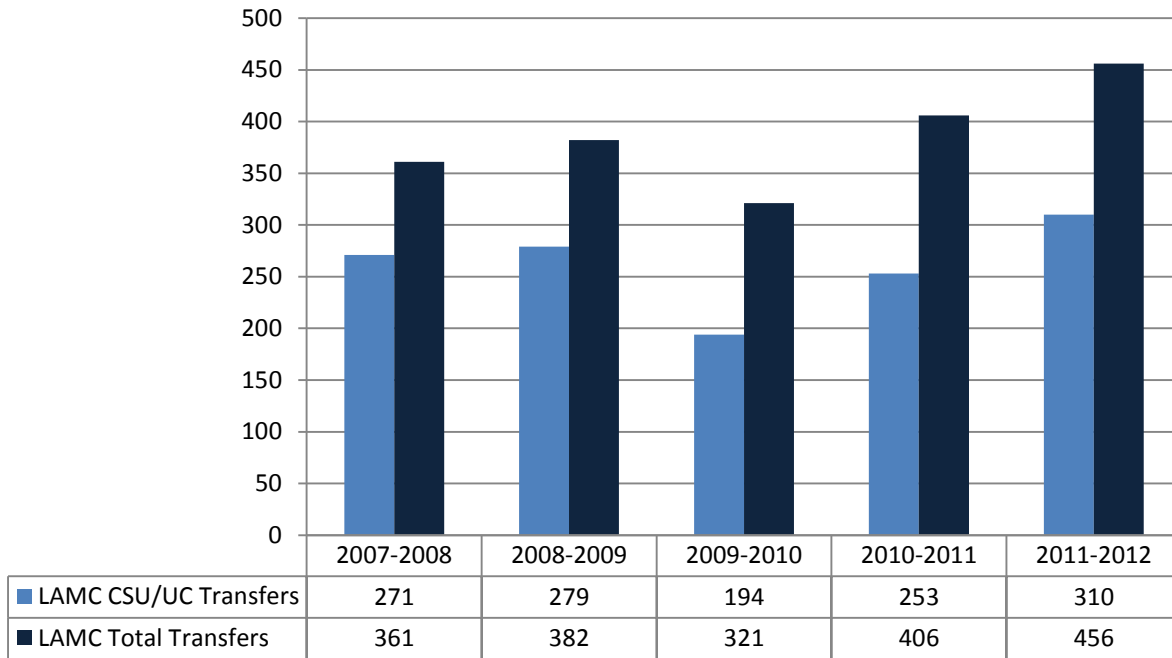
See **Appendix F.** for the number of certificates awarded each year by title.

See **Appendix G.** for certificate attainment rates of new, first-time students in three and six years.

**6. Institution-set standard for student transfer to 4-year colleges/universities:**

Student transfer to 4-year colleges/universities can be given as a percentage or number.

### LAMC Transfers to 4-Year Institutions



	5-Year Average	5-Year Minimum	95% of 5-Year Average
LAMC CSU/UC Transfers	261.4	194	248.3
LAMC Total Transfers (also includes CA Private and Out-of-State Institutions)	385.2	321	365.9

**Transfers by type of destination institution:**

CSUs	LAMC	LACCD	LAMC as % of LACCD
2007-2008	243	4057	6.0%
2008-2009	251	3798	6.6%
2009-2010	176	2577	6.8%
2010-2011	226	3517	6.4%
2011-2012	276	3746	7.4%

California Private Institutions	LAMC	LACCD	LAMC as % of LACCD
2007-2008	62	1093	5.7%
2008-2009	68	900	7.6%
2009-2010	91	1125	8.1%
2010-2011	108	956	11.3%
2011-2012	104	838	12.4%

UCs	LAMC	LACCD	LAMC as % of LACCD
2007-2008	28	847	3.3%
2008-2009	28	791	3.5%
2009-2010	18	861	2.1%
2010-2011	27	906	3.0%
2011-2012	34	882	3.9%

Out-of-State Institutions	LAMC	LACCD	LAMC as % of LACCD
2007-2008	28	490	5.7%
2008-2009	35	587	6.0%
2009-2010	36	653	5.5%
2010-2011	45	755	6.0%
2011-2012	42	781	5.4%

See **Appendix H** for six-year transfer rates developed by the California Community College Chancellor’s Office using a specific transfer cohort methodology.

**Appendix A. Successful Course Completion Rates by Discipline**

Discipline	Fall 2008	Fall 2009	Fall 2010	Fall 2011	Fall 2012
ACCTG	53.5%	58.0%	64.1%	67.9%	69.9%
ADM JUS	68.5%	66.9%	70.8%	69.6%	66.5%
AFRO AM	73.9%	40.5%	56.3%	59.8%	82.8%
ANATOMY	52.9%	60.7%	57.8%	76.7%	76.3%
ANTHRO	48.0%	54.9%	58.9%	56.3%	53.2%
ART	77.1%	73.6%	74.9%	70.0%	74.4%
ASTRON	48.9%	59.0%	54.5%	77.1%	62.5%
BIOLOGY	57.3%	65.0%	67.2%	63.4%	59.2%
BUS	45.8%	65.6%	66.4%	64.8%	72.3%
CAOT	49.8%	58.3%	61.9%	68.4%	73.6%
CH DEV	76.6%	80.4%	76.6%	85.2%	83.1%
CHEM	76.9%	69.4%	62.9%	64.3%	61.9%
CHICANO	70.2%	63.3%	60.5%	65.7%	75.1%
CINEMA	61.9%	59.3%	58.1%	67.0%	56.9%
CO SCI	56.9%	60.7%	63.4%	57.8%	55.2%
DANCETQ					55.9%
DEV COM	54.5%	58.7%	55.9%	51.7%	50.5%
DRAFT	71.4%	56.3%	54.5%		
E.S.L.	73.0%	76.7%	75.3%	81.2%	80.9%
ECON	67.4%	73.0%	68.9%	68.5%	69.7%
EDUC	71.4%	69.5%	54.5%	69.2%	85.7%
ENG GEN	67.9%	70.4%	64.7%	54.5%	
ENGLISH	59.1%	64.1%	68.5%	71.1%	70.4%
ENV SCI		74.2%			
ESL	71.4%	79.9%	73.0%	80.4%	79.1%
FAM &CS	60.4%	71.9%	78.1%	81.3%	78.9%
FINANCE	28.6%	34.4%	23.5%	63.6%	59.5%
FRENCH	35.1%	47.9%	70.3%	41.0%	58.0%
FSMGMT	71.9%	81.7%	88.0%	89.3%	86.6%
GEOG	74.0%	68.7%	64.8%	67.1%	65.4%
GEOLOGY	81.8%	96.3%	90.0%	89.5%	
HEALTH	63.3%	62.6%	67.0%	69.4%	71.5%
HISTORY	59.3%	65.5%	64.4%	65.2%	66.1%
HUMAN	57.4%	67.4%	75.5%	75.5%	85.0%
INTRDGN	50.9%	76.2%	74.5%	67.2%	72.5%
ITALIAN	81.6%	55.6%	55.4%	58.3%	67.9%
LAW	71.9%	68.8%	78.7%	75.6%	74.6%
LIB SCI		82.4%	62.1%	68.0%	68.0%
LING	63.9%	86.1%	71.4%	63.0%	89.4%
LRNSKIL	70.3%	79.3%	71.8%	80.0%	81.3%

Discipline	Fall 2008	Fall 2009	Fall 2010	Fall 2011	Fall 2012
MARKET	32.4%	33.3%	81.3%	78.7%	76.6%
MATH	48.2%	51.7%	49.4%	49.1%	53.1%
MGMT	55.2%	54.6%	30.2%	54.0%	58.5%
MICRO	66.7%	74.5%	57.4%	68.5%	74.4%
MULTIMD	73.5%	85.3%	84.5%	85.1%	87.4%
MUSIC	46.0%	37.6%	66.3%	61.0%	54.8%
OCEANO	89.7%	56.5%	54.0%		
PERSDEV	72.9%	84.5%	79.9%	81.5%	80.0%
PHILOS	75.1%	75.4%	70.6%	76.9%	77.4%
PHOTO		66.7%	96.6%	80.8%	72.2%
PHYS ED	79.0%	82.8%	78.6%	82.7%	78.8%
PHYS SC	81.3%	77.1%	78.6%	79.1%	75.2%
PHYSICS	45.0%	50.0%	75.0%	76.0%	53.3%
PHYSIOL	69.0%	76.7%	78.9%	76.9%	54.4%
POL SCI	70.5%	62.2%	71.5%	68.0%	64.7%
PSYCH	59.3%	67.0%	74.9%	70.2%	65.9%
SOC	62.4%	66.4%	64.2%	70.4%	73.5%
SPANISH	71.4%	79.8%	78.9%	84.0%	78.8%
SPEECH	53.2%	55.9%	71.5%	65.8%	64.1%
THEATER		60.9%	65.3%	68.3%	83.2%
<b>Grand Total</b>	<b>62.9%</b>	<b>66.2%</b>	<b>67.5%</b>	<b>69.2%</b>	<b>69.2%</b>
<b>Minimum</b>	<b>28.6%</b>	<b>33.3%</b>	<b>23.5%</b>	<b>41.0%</b>	<b>50.5%</b>
<b>Maximum</b>	<b>89.7%</b>	<b>96.3%</b>	<b>96.6%</b>	<b>89.5%</b>	<b>89.4%</b>

**Appendix B. Course Retention Rates by Discipline**

Discipline	Fall 2008	Fall 2009	Fall 2010	Fall 2011	Fall 2012
ACCTG	80.8%	82.2%	82.0%	81.4%	79.5%
ADM JUS	94.1%	94.3%	93.0%	92.8%	93.6%
AFRO AM	91.3%	81.1%	87.5%	82.4%	87.9%
ANATOMY	75.0%	80.9%	71.1%	87.2%	89.5%
ANTHRO	75.8%	84.1%	84.2%	87.8%	90.3%
ART	86.3%	88.7%	88.3%	85.6%	89.7%
ASTRON	83.5%	83.3%	80.3%	91.4%	87.5%
BIOLOGY	82.7%	86.4%	88.6%	83.9%	85.7%
BUS	80.0%	90.2%	91.1%	89.9%	90.3%
CAOT	72.5%	85.3%	83.2%	90.1%	88.0%
CH DEV	89.9%	94.6%	92.5%	95.1%	95.0%
CHEM	87.6%	86.6%	80.0%	81.3%	79.1%
CHICANO	90.7%	94.0%	86.6%	88.2%	90.7%
CINEMA	94.4%	88.3%	92.5%	89.0%	84.4%
CO SCI	87.9%	87.8%	81.8%	86.3%	87.9%
DANCETQ					67.6%
DEV COM	83.9%	89.7%	88.2%	88.7%	86.4%
DRAFT	90.5%	87.5%	95.5%		
E.S.L.	90.3%	93.3%	92.7%	95.3%	96.3%
ECON	77.2%	83.7%	84.0%	87.6%	90.9%
EDUC	95.2%	91.5%	90.9%	97.4%	97.1%
ENG GEN	78.6%	100.0%	94.1%	81.8%	
ENGLISH	83.2%	84.4%	85.9%	87.1%	85.7%
ENV SCI		96.8%			
ESL	94.7%	95.9%	92.6%	97.3%	95.2%
FAM &CS	77.7%	92.0%	91.3%	93.3%	91.4%
FINANCE	57.1%	84.4%	82.4%	100.0%	95.2%
FRENCH	50.0%	80.8%	86.5%	64.1%	78.0%
FSGMT	86.3%	94.3%	94.3%	93.4%	93.1%
GEOG	94.3%	89.6%	89.3%	93.6%	84.8%
GEOLOGY	90.9%	100.0%	92.5%	92.1%	
HEALTH	89.7%	91.9%	93.7%	94.2%	94.5%
HISTORY	84.9%	88.9%	81.5%	85.0%	85.5%
HUMAN	87.2%	94.2%	95.1%	92.5%	96.5%
INTRDGN	73.0%	94.0%	88.2%	85.4%	87.0%
ITALIAN	94.7%	88.9%	87.5%	87.5%	80.4%
LAW	80.0%	82.2%	90.1%	85.2%	83.5%
LIB SCI		100.0%	86.2%	80.0%	88.0%
LING	88.9%	97.2%	90.5%	94.4%	89.4%
LRNSKIL	86.8%	93.5%	85.9%	87.7%	93.8%

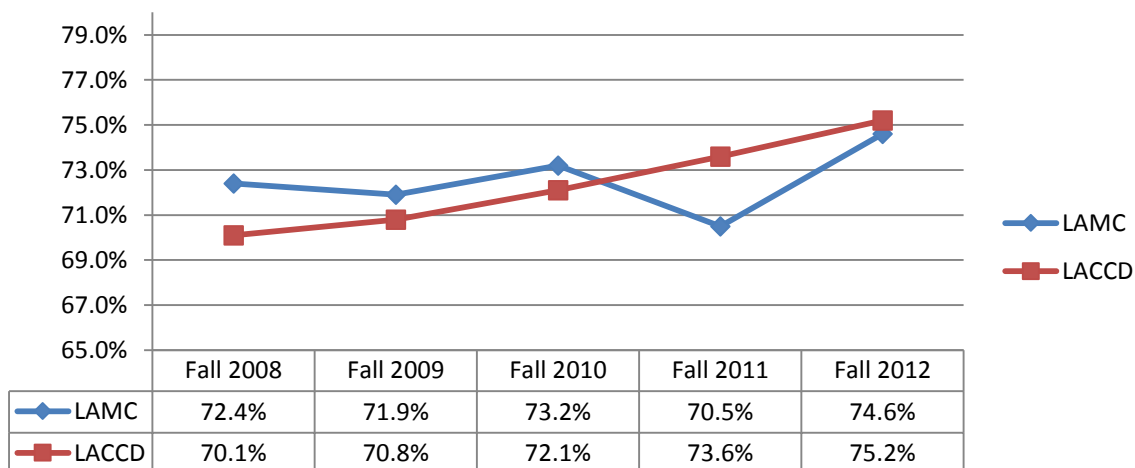


Discipline	Fall 2008	Fall 2009	Fall 2010	Fall 2011	Fall 2012
MARKET	85.3%	81.8%	96.9%	95.7%	92.2%
MATH	71.7%	77.3%	76.4%	76.3%	78.7%
MGMT	82.8%	86.1%	92.2%	91.3%	90.0%
MICRO	79.8%	85.3%	73.1%	79.8%	89.0%
MULTIMD	86.9%	91.6%	90.6%	90.7%	91.2%
MUSIC	83.3%	81.5%	91.2%	86.0%	82.2%
OCEANO	92.3%	87.1%	64.4%		
PERSDEV	88.7%	98.7%	94.4%	90.5%	90.9%
PHILOS	90.7%	91.2%	89.2%	86.4%	90.0%
PHOTO		100.0%	96.6%	92.3%	83.3%
PHYS ED	90.3%	93.4%	90.9%	92.9%	86.8%
PHYS SC	93.8%	88.1%	87.8%	90.0%	81.2%
PHYSICS	55.0%	67.9%	85.7%	80.0%	75.0%
PHYSIOL	79.3%	94.8%	86.2%	93.4%	74.6%
POL SCI	86.3%	89.0%	89.9%	88.6%	86.2%
PSYCH	80.3%	89.4%	88.9%	89.1%	90.3%
SOC	86.2%	89.6%	86.3%	89.0%	89.4%
SPANISH	92.0%	95.2%	93.4%	94.7%	93.0%
SPEECH	85.7%	86.0%	88.2%	83.9%	86.9%
THEATER		80.4%	95.9%	89.4%	86.9%
<b>Grand Total</b>	<b>84.3%</b>	<b>88.3%</b>	<b>87.2%</b>	<b>88.0%</b>	<b>87.6%</b>
<b>Minimum</b>	50.0%	67.9%	64.4%	64.1%	67.6%
<b>Maximum</b>	95.2%	100.0%	96.9%	100.0%	97.1%

### Appendix C. LACCD-Calculated Persistence Rates

Cohorts consist of new, first-time credit students completing six or more units (with a grade of A, B, C, D, or P) at the college in the fall semester who attempt any (>0) units in the following fall semester at the same college (new transfer students and concurrent high school students were excluded).

#### LACCD-Calculated Fall-to-Fall Persistence



**Appendix D. Number of Degrees by Year and Title**

Degree	2008-2009	2009-2010	2010-2011	2011-2012	2012-2013	5-Year Total
<b>AA</b>	<b>383</b>	<b>351</b>	<b>374</b>	<b>417</b>	<b>598</b>	<b>2123</b>
Accounting		4	7		4	15
Addiction Studies		1	1			2
Art	3	2	2	3	3	13
Business Administration	2	1	1	1	2	7
Business Management	3	1				4
Chicano Studies	8	6	5	2	5	26
Child Development	44	40	24	26	39	173
Computer and Office Applications					1	1
Computer Applications and Office Technologies	2	2	1	5	4	14
Computer Science	3	3	2	4	5	17
Computer Science - Business Emphasis	2	1				3
English			4	11	9	24
Finance		1				1
Food Mgmt Production Service & Related Techniques	13	4	10	4	13	44
Foods and Nutrition				1		1
General Studies: Arts and Humanities	2		1	2	5	10
General Studies: Communication and Literature		1	2		12	15
General Studies: Natural Sciences	10	11	16	14	28	79
General Studies: Social and Behavioral Sciences	26	37	43	65	91	262
Gerontology				1		1
Health Sciences	1					1
Interdisciplinary Studies	67	26	14	6	3	116
Interior Design		1	2		6	9
Legal Assisting (Paralegal)	8	13	13	8	8	50
Liberal Arts	52	35	10	2		99
Liberal Arts: Arts and Humanities	1		1	3	6	11
Liberal Arts: Business	13	28	17	20	21	99
Liberal Arts: Communication and Literature	2	3	6	16	33	60
Liberal Arts: Natural Sciences	3	6	9	19	30	67
Liberal Arts: Social and Behavioral Sciences	37	67	99	127	183	513
Liberal Studies-Multiple Subject Teacher Prep.	7	10	13	19	12	61
Management			1		1	2
Marketing	1				1	2
Mathematics	5	10	8	2	10	35
Multimedia: Animation and 3D Design Concentration					3	3
Multimedia: Design for Animation & Interactive Med		1	2		1	4
Multimedia: Design/Writing Concentration	1	1				2
Multimedia: Graphic and Web Design					4	4
Multimedia: Video Production Concentration					1	1
Multimedia: Video/Sound Production Concentration	1		1	1		3
Multimedia:Design for Animation & Interactive Med			1			1
Painting and Drawing	1		2	1		4
Philosophy	1	1			1	3
Physical Science			1			1
Political Science	2	1	4	1	5	13
Psychology	20	17	28	35	30	130
Sociology	11	13	23	17	15	79
Spanish	2	3		1	3	9
Transfer Graduation Plan	20					20
(Unknown)	9					9
<b>AS</b>	<b>22</b>	<b>36</b>	<b>52</b>	<b>55</b>	<b>55</b>	<b>220</b>
Administration of Justice	10	22	26	23	18	99
Biology, General			2	2	7	11
Health Science	12	14	24	30	30	110
<b>AT</b>					<b>1</b>	<b>1</b>
Communication Studies for Transfer					1	1
<b>ST</b>					<b>3</b>	<b>3</b>
Mathematics for Transfer					3	3
<b>Grand Total</b>	<b>405</b>	<b>387</b>	<b>426</b>	<b>472</b>	<b>657</b>	<b>2347</b>

## Appendix E. Three- and Six-Year Degree Attainment Rates

### Degree Attainment Rates of New, First-Time Students in 3 and 6 Years

Cohort	Cohort Size (N)	Degree in 3 Years (N)	Degree in 6 Years (N)	% in 3 Years	% in 6 Years
Fall 2003	1164	59	148	5.1%	12.7%
Fall 2004	1052	50	114	4.8%	10.8%
Fall 2005	1170	62	118	5.3%	10.1%
Fall 2006	1055	53	105	5.0%	10.0%
Fall 2007	1278	72	125	5.6%	9.8%
Fall 2008	1709	72		4.2%	
Fall 2009	1553	52		3.3%	
Fall 2010	1880	58		3.1%	

## Appendix F. Number of Certificates by Year and Title

Certificate	2008-2009	2009-2010	2010-2011	2011-2012	2012-2013	5-Year Total
Bilingual/Bicultural Pre-School	4	4	4	4	4	20
Child Care - School-Age		1	1	1		3
Child Development - Infant/Toddler	3		2	1	3	9
Child Development - Pre-School	30	34	19	11	26	120
CSU General Education	58	62	69	152	200	541
Culinary Arts	8	2	6	8	10	34
Engineering CADD and CAM (Manufacturing)		1				1
Gerontology		1				1
IGETC	11	10	12	26	26	85
Interior Design				1		1
Law Enforcement Academy		1				1
Legal Assisting (Paralegal)	45	30	31	26	69	201
Microcomputer Applications Management	2		1	1	2	6
Microcomputer Programming	1		1	2	1	5
Multimedia: Animation Concentration					1	1
Multimedia:Video/Sound Production					1	1
Office Administration	1	1	1		5	8
Office Assistant	1	2	5	1	3	12
Preschool	1					1
Retail Management (WAFC)			1			1
Teacher's Assistant	1			1		2
Teacher's Assistant - Bilingual/Bicultural					1	1
Teacher's Assistant - Exceptional Children		2		4	4	10
(Unknown)	3					3
<b>Grand Total</b>	<b>169</b>	<b>151</b>	<b>153</b>	<b>239</b>	<b>356</b>	<b>1068</b>

## Appendix G. Three- and Six-Year Certificate Attainment Rates

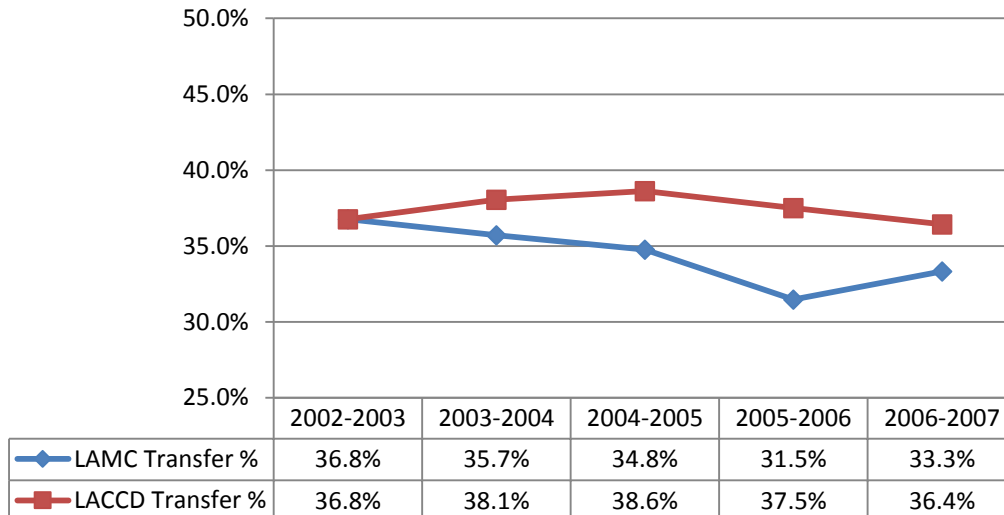
### Certificate Attainment Rates of New, First-Time Students in 3 and 6 Years

Cohort	Cohort Size (N)	Cert. in 3 Years (N)	Cert. in 6 Years (N)	% in 3 Years	% in 6 Years
Fall 2003	1164	10	25	0.9%	2.1%
Fall 2004	1052	6	24	0.6%	2.3%
Fall 2005	1170	7	30	0.6%	2.6%
Fall 2006	1055	12	39	1.1%	3.7%
Fall 2007	1278	26	64	2.0%	5.0%
Fall 2008	1709	30		1.8%	
Fall 2009	1553	35		2.3%	
Fall 2010	1880	52		2.8%	

## Appendix H. Six-Year Transfer Rates (developed by the California Community College Chancellor's Office)

For these analyses, cohorts consist of first-time students who, within six years of initial enrollment, have shown "behavioral intent to transfer" by completing twelve credit units and attempting transfer-level math or English. (see: [http://datamart.cccco.edu/App\\_Doc/Transfer%20Cohort%20Methodology.doc](http://datamart.cccco.edu/App_Doc/Transfer%20Cohort%20Methodology.doc))

### 6-Year Transfer Rates



Cohort Year	LAMC Cohort (N)	LAMC Transfer (N)	LAMC Transfer %
2002-2003	639	235	36.8%
2003-2004	336	120	35.7%
2004-2005	351	122	34.8%
2005-2006	502	158	31.5%
2006-2007	588	196	33.3%

Cohort Year	LACCD Cohort (N)	LACCD Transfer (N)	LACCD Transfer %
2002-2003	10465	3848	36.8%
2003-2004	6466	2461	38.1%
2004-2005	6423	2481	38.6%
2005-2006	7380	2768	37.5%
2006-2007	9641	3513	36.4%