

Los Angeles Mission College

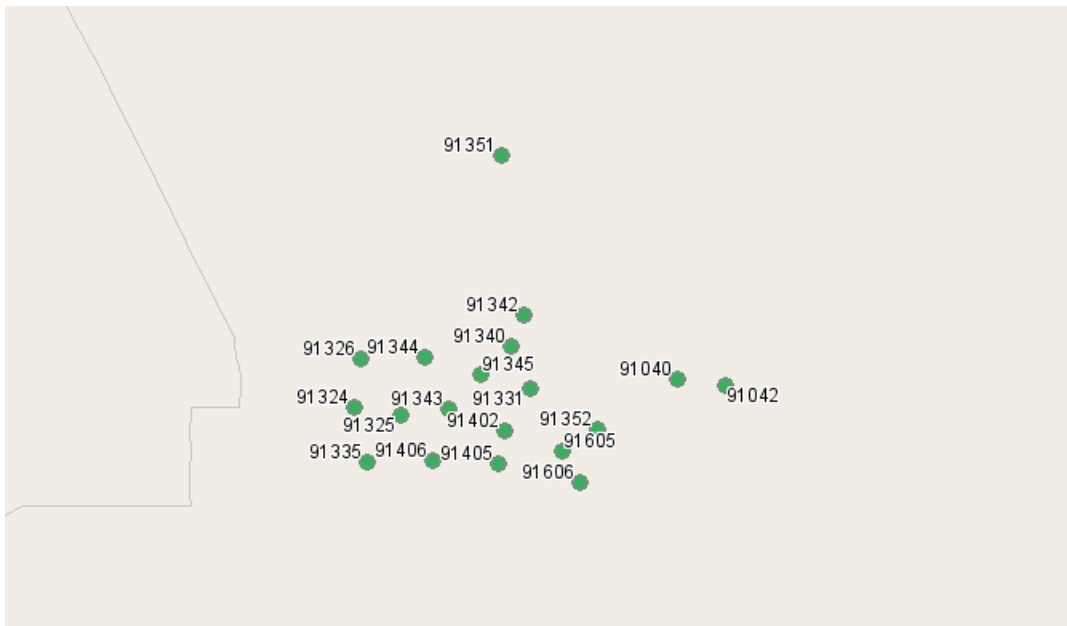


13356 Eldridge Avenue

Sylmar, California 91342

818.364.7600

Growth Report



Economic Modeling Specialists, Inc. www.economicmodeling.com

EMSI

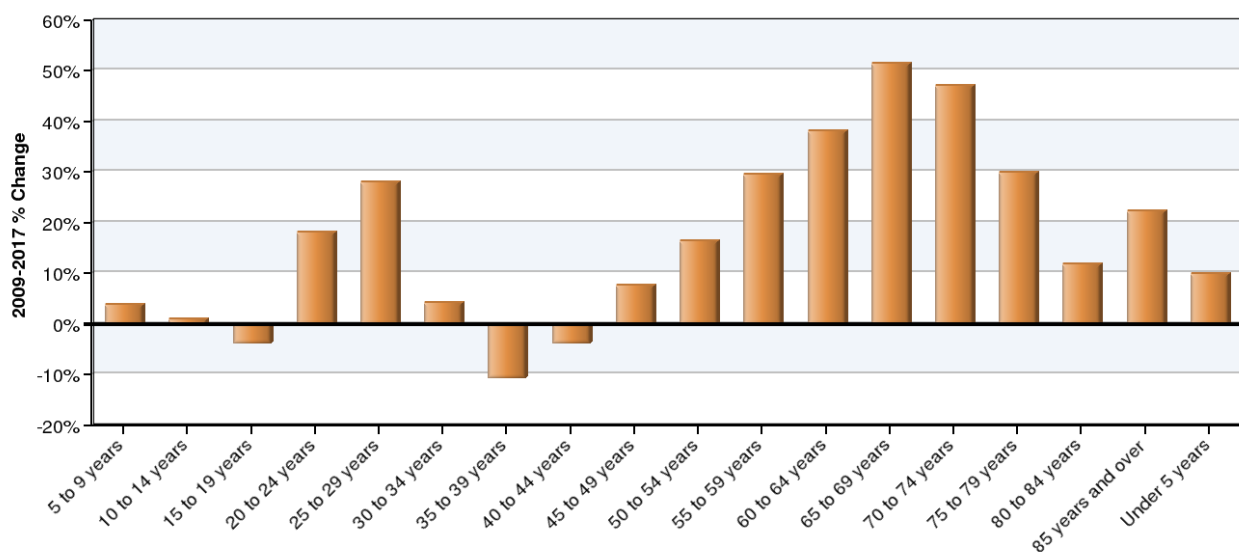
Region Info

Region: LAMC Extended

Description: Lamc extended service area

ZIP Areas: 91040 (in Los Angeles county, California), 91042 (in Los Angeles county, California), 91324 (in Los Angeles county, California), 91325 (in Los Angeles county, California), 91326 (in Los Angeles county, California), 91331 (in Los Angeles county, California), 91335 (in Los Angeles county, California), 91340 (in Los Angeles county, California), 91342 (in Los Angeles county, California), 91343 (in Los Angeles county, California), 91344 (in Los Angeles county, California), 91345 (in Los Angeles county, California), 91351 (in Los Angeles county, California), 91352 (in Los Angeles county, California), 91402 (in Los Angeles county, California), 91405 (in Los Angeles county, California), 91406 (in Los Angeles county, California), 91605 (in Los Angeles county, California), 91606 (in Los Angeles county, California)

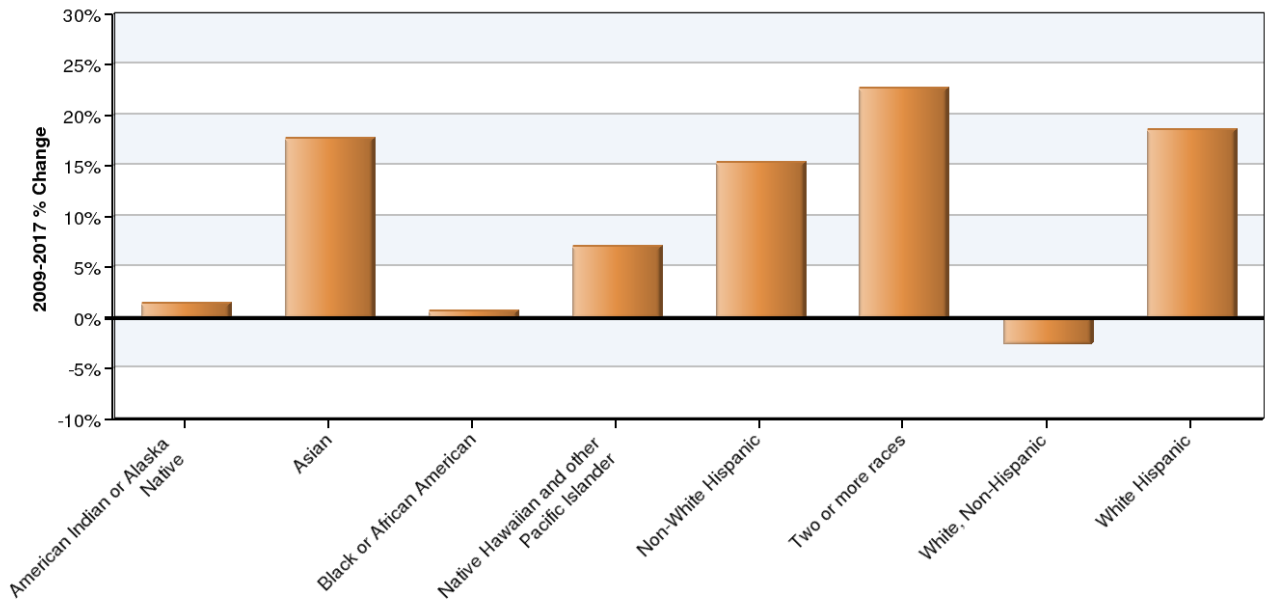
Growth by Age



Age	2009 Population	2017 Population	Change	% Change
5 to 9 years	64,830	67,286	2,456	4%
10 to 14 years	64,497	65,050	553	1%
15 to 19 years	72,551	69,841	-2,710	-4%
20 to 24 years	68,191	80,467	12,276	18%
25 to 29 years	60,166	77,067	16,901	28%
30 to 34 years	58,719	61,183	2,464	4%
35 to 39 years	65,678	58,672	-7,006	-11%
40 to 44 years	66,770	64,197	-2,573	-4%
45 to 49 years	64,972	69,964	4,992	8%
50 to 54 years	56,860	66,158	9,298	16%
55 to 59 years	46,222	59,905	13,683	30%
60 to 64 years	36,790	50,818	14,028	38%
65 to 69 years	26,402	39,981	13,579	51%
70 to 74 years	20,003	29,420	9,417	47%
75 to 79 years	15,578	20,236	4,658	30%
80 to 84 years	11,572	12,945	1,373	12%
85 years and over	11,600	14,178	2,578	22%
Under 5 years	68,371	75,199	6,828	10%

Source: EMSI Complete Employment - 4th Quarter 2009

Growth by Race/Ethnicity



Race/Ethnicity	2009 Population	2017 Population	Change	% Change
American Indian or Alaska Native	2,276	2,308	32	1%
Asian	82,218	96,799	14,581	18%
Black or African American	27,121	27,309	188	1%
Native Hawaiian and other Pacific Islander	967	1,035	68	7%
Non-White Hispanic	20,359	23,472	3,113	15%
Two or more races	18,161	22,272	4,111	23%
White, Non-Hispanic	258,465	251,739	-6,726	-3%
White Hispanic	470,205	557,634	87,429	19%

Source: EMSI Complete Employment - 4th Quarter 2009

Data Sources and Calculations

Demographic Data

The demographic data in this report is compiled from several sources using a specialized process. Sources include US Census Bureau annual estimates, birth and mortality rates from the US Health Department, and projected regional job growth.

State Data Sources

This report uses state data from the following agencies: California Labor Market Information Department.