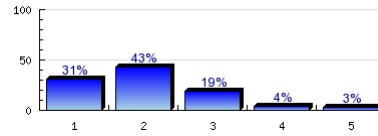


Fall 2014 Student Services Survey Results

If you used any of the following services during the last 12 months, how satisfied were you with each service you used?

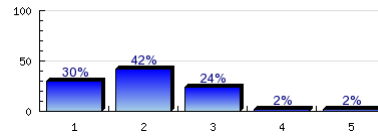
1. Admissions and Records



n=2464
av.=2
md=2
dev.=0.9
ab.=384

2. Assessment Center

Very satisfied

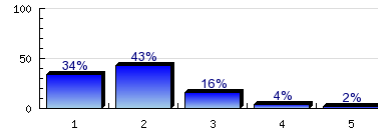


Very dissatisfied

n=1667
av.=2
md=2
dev.=0.9
ab.=1163

3. Bookstore

Very satisfied

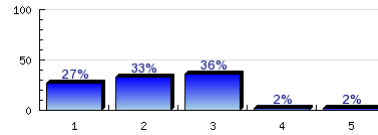


Very dissatisfied

n=2488
av.=2
md=2
dev.=0.9
ab.=289

4. CalWORKS

Very satisfied

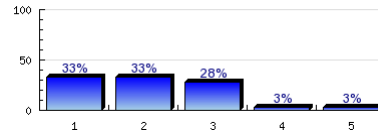


Very dissatisfied

n=759
av.=2.2
md=2
dev.=0.9
ab.=2022

5. Child Development Center

Very satisfied

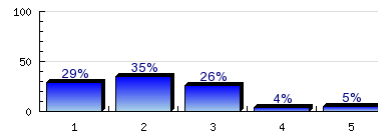


Very dissatisfied

n=854
av.=2.1
md=2
dev.=1
ab.=1943

6. College Sheriff

Very satisfied

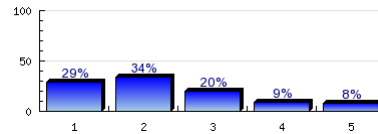


Very dissatisfied

n=965
av.=2.2
md=2
dev.=1.1
ab.=1791

7. Counseling Services (general counseling, excluding the other services on this list)

Very satisfied

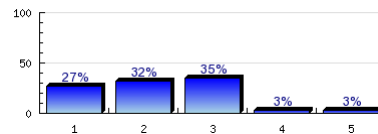


Very dissatisfied

n=1891
av.=2.3
md=2
dev.=1.2
ab.=884

8. Disabled Student Programs & Services

Very satisfied

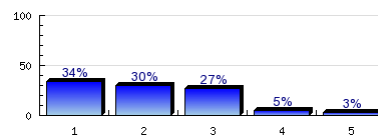


Very dissatisfied

n=572
av.=2.2
md=2
dev.=1
ab.=2256

9. EOPS/CARE

Very satisfied



Very dissatisfied

n=805
av.=2.1
md=2
dev.=1
ab.=2001

10. Financial Aid and Scholarships Office	Very satisfied		Very dissatisfied	n=2036 av.=2.3 md=2 dev.=1.2 ab.=763
11. Food Services	Very satisfied		Very dissatisfied	n=1637 av.=2 md=2 dev.=1 ab.=1134
12. International Student Center	Very satisfied		Very dissatisfied	n=612 av.=2.2 md=2 dev.=0.9 ab.=2171
13. Learning Resource Center (LRC)	Very satisfied		Very dissatisfied	n=1405 av.=1.9 md=2 dev.=0.8 ab.=1347
14. Library	Very satisfied		Very dissatisfied	n=2187 av.=1.7 md=2 dev.=0.8 ab.=601
15. On-Campus Orientation	Very satisfied		Very dissatisfied	n=1156 av.=2 md=2 dev.=0.9 ab.=1621
16. Online Orientation	Very satisfied		Very dissatisfied	n=1001 av.=2.1 md=2 dev.=0.9 ab.=1741
17. Student Business Office (parking permits, tuition & fee payments)	Very satisfied		Very dissatisfied	n=1846 av.=2 md=2 dev.=1 ab.=924
18. Student Health Center	Very satisfied		Very dissatisfied	n=1011 av.=1.9 md=2 dev.=0.9 ab.=1773
19. Student Support Services Program	Very satisfied		Very dissatisfied	n=571 av.=2.1 md=2 dev.=0.9 ab.=2218
20. Transfer Center	Very satisfied		Very dissatisfied	n=857 av.=2 md=2 dev.=1 ab.=1943
21. Veterans Affairs Office	Very satisfied		Very dissatisfied	n=441 av.=2.2 md=2 dev.=0.9