

TABLE OF CONTENTS

Master Plan Acknowledgments and Participants	02		
Executive Summary	03		
President’s Message	04		
College Mission, Vision, Values, & Theme	05		
Introduction & Background			
History	06		
Location & Comparison of LACCD and Neighboring Colleges	07		
Campus Growth Projections	08		
Propositions A & AA	09		
The Need for a Refined Master Plan	10		
Campus Context and Objectives			
Landmarks	11		
Neighborhood	12		
Existing Site	13		
Existing Site Analysis Diagrams			
- Building Area (SF) and Information	14		
- Distance and Time	15		
- Service & Fire Access and Circulation	16		
- Pedestrian Access and Circulation	17		
- Vehicular Access, Circulation, and Parking	18		
- ADA Compliance	19		
- Security and Safety	20		
- Utilities			
– Gas, Electricity, & Telephone Lines	21		
– Grading and Drainage	22		
– Water	23		
- Site Strengths	24		
- Site Weaknesses	25		
Edge Conditions			
- Key Plan	26		
- Existing Campus External Perimeter			
– North & South	27		
– East	28		
– West	29		
- Extended Campus External Perimeter	30		
- Existing and Extended Campus’ Internal Perimeters	31		
Master Plan Process			
Master Plan Process	32		
Campus Land Use and Zoning	33		
		Master Plan	
		Design & Development Principles	34
		Program Summary by Project	35
		The Arroyo	36
		Concept Diagrams	
		- Concept A	37
		- Concept B	38
		- Concept B1	39
		Proposed Master Plan	40
		Phasing Plan	
		- Roads, Parking, and Infrastructure	42
		- Phase I : Propositions A & AA Projects	44
		- Phase II : Beyond Proposition A & AA Projects	46
		Building Areas and Parking Summary	48
		Master Plan Diagrams	
		- Pedestrian Access and Circulation	49
		- Service & Fire Access and Circulation	50
		- ADA Compliance	51
		- Vehicular Access, Circulation, and Parking	52
		Landscape Analysis	
		Site Context	53
		Massing Model and Shade Study	54
		Existing Spatial Network	55
		Existing Circulation	56
		Existing Tree Survey	57
		Existing Vegetation	58
		Soils Analysis	59
		Proposed Spatial Network	60
		Proposed Pedestrian Circulation	61
		Proposed Trees	62
		Proposed Softscape	63
		Arroyo Scheme	64
		Scheme Sections	65
		Plant Palette	66
		Specific Recommendations	70
		Campus Sustainability	73



LOS ANGELES MISSION COLLEGE ACKNOWLEDGEMENTS

Los Angeles Community College District Board of Trustees

Michael D. Waxman	President
Sylvia Scott-Hayes	Vice President
Kelly G. Candaele	
Mona Field	
Warren T. Furutani	
Georgia L. Mercer	
Nancy Pearlman	
Luis Gomez	Student Trustee

Los Angeles Community College District Administration

Darroch F. Young	Chancellor
Adriana Barrera	Senior Vice Chancellor
Larry H. Eisenberg	Executive Director, Facilities Planning and Development
Camille A. Goulet	General Counsel

Los Angeles Mission College Administration

Ernest Moreno	President
Karen Hoefel	Vice President, Administrative Services
Joe S. Ramirez	Vice President, Student Services
Kathleen Burke-Kelly	Vice President, Academic Affairs

District Citizen’s Oversight Committee (DCOC)

College Citizen’s Oversight Committee (CCOC)

Special thanks to the Faculty, Staff, Students, and Community Members for their thoughtful participation.

MASTER PLAN CONSULTANT TEAM PARTICIPANTS

Leo A Daly, Master Planning Architects

Judy Johnson	Project Director
Peter Ruppel	Project Manager
Brian Perkins	Design Director
Mia Martinez	
Roxana Salcedo	
Teena Santiago	
Xin Wang	

Mia Lehrer and Associates, Landscape Architects

Esther Margulies	Partner
David Fletcher	Senior Associate

URS Corporation

Dev Vrat	Senior Urban and Environmental Planner
Kavita Mehta	Senior Urban and Environmental Planner
Richard Burke	Vice President
Douglas Smith	Transportation Engineering Manager
David Miller	Senior Transportation Engineer
Christopher Chavez	Urban Planner
Sylvia Novoa	Public Outreach Manager

Psomas

Jeff T. Chess	Project Manager
Alysen Mayes	Professional Engineer

Gateway Science and Engineering, GSE

Nick Quintanilla	Project Director
Paul Moskos	Project Manager
Michele Walters	Administrative Assistant
Larry Tipton	Senior Project Manager



EXECUTIVE SUMMARY

Background

Los Angeles Mission College (LAMC) was opened to the public in February 1975. The founding faculty members worked diligently to develop thriving academic and vocational programs under challenging circumstances.

One of the major obstacles the college community faced was the lack of a permanent campus for 16 years. Students attended classes scattered throughout the cities of San Fernando and Sylmar. The College moved to its permanent campus in the summer of 1991 and was built on 22-acre land in the City of Sylmar. With the quick growth of the College, the original site was not large enough and many programs had to be based at satellite locations due to the lack of space or facilities on the main campus.

Recent voter approval of two major bond construction issues, Propositions A and AA, marked the beginning of an exciting new chapter in Los Angeles Mission College history. The influx of bond and State money allowed the College to plan for the expansion of its facilities to serve up to 15,000 students by the year 2015. Two parcels of undeveloped land, a third mile down from the existing campus, were acquired by LAMC to develop new facilities and serve its vibrant and diverse population.

The District retained Leo A Daly and Mia Lehrer + Associates in 2006 to prepare an updated Master Plan for Los Angeles Mission College.

The Process

Upon receiving the appointment, Leo A Daly immediately commenced an intensive seven-month master planning process in close partnership with the College leaders. Frequent meetings were held with College Administrators and numerous workshops were held with faculty, staff and student leaders. Master planning issues were identified and discussed, goals and objectives were established, and several master planning scenarios were developed and evaluated.

Development of the Master Plan was guided by the President of the College and involved a broad-based community of stakeholders, including key faculty members, administrators, staff, students, nearby residents and business leaders.

The mission statement of the College was a major conceptual driver for the development of the Master Plan: “the mission of Los Angeles Mission College is the success of our students.”

Analyzing the existing campus in the context of the surrounding community generated ideas about how to improve the campus by carefully integrating landscaping, lighting, and new facilities. In addition to offering essential educational resources, the campus should provide the surrounding community with easy and safe access to open spaces.

Mia Lehrer + Associates landscape architects undertook a concurrent landscape planning process to coordinate campus landscape improvements with the new Master Plan.

Growth of the campus cannot be sufficiently accommodated on its existing 22.5-acre site. The acquisition of two parcels of undeveloped land, a third mile down from the existing campus, is referred as the extended campus. Since enrollment and demand for services continue to increase, it is imperative that the Master Plan efficiently organize and integrate new facilities on the existing, as well as at the extended, campus.

Several master planning concepts were developed and presented at workshops & scoping meetings. A preferred concept, Concept B1, was selected for further development. Concept B1 optimized the layout of buildings on the existing site and made efficient use of funds available from Proposition A & AA. Concept B1 also proposed a rational sequence of construction, allowing development to meet the time frame established by Proposition A & AA.

Recommendations

The Master Plan organizes and integrates major activities occurring on the existing campus by organizing buildings with various functionalities to form a campus core, which will be newly-landscaped and circulated by pedestrian paths.

The Master Plan will be completed over an eight year period in two phases. Preparation to the infrastructure will facilitate

the start of Phase 1, when Proposition A & AA projects will begin construction.

In Phase 1, all buildings and structures proposed under this initial phase are projected to be complete by the year 2010. Funded in the first Proposition A & AA project, the Health, Physical Education & Fitness Center and temporary surface parking lot on the extended campus provide new facilities and 131 parking spaces. The relocation of Plant Facilities and the construction of Parking Structure B2 above it expand Parking Structure A. The construction of the Family & Consumer Studies facility follows. Phase 1 is concluded with the construction of the Media Arts center. The Arroyo is segregated into four areas on the south half of the campus, three of which will be completed by the end of Phase 1. The improved Mass Transit Center will hopefully allow the College to be better served by additional bus lines.

Phase 2 of the Master Plan begins construction of projects funded beyond Proposition A & A, which are currently scheduled for completion by the end of 2015. The first project of Phase 2 to be constructed, the Student Services building and the last segment of the Arroyo, will take place at the existing campus. The temporary surface parking along Eldridge Ave will be eliminated and a secondary main entrance to the Instructional Administration Building with a drop-off will be added facing Eldridge Ave. To provide a suitable site location for a new education building and a secondary pedestrian entrance onto campus, the northwest single-story wing of the Instructional Administration Building will be removed. A corner monument will also be constructed at the College’s most notable intersection, Eldridge Ave and Hubbard St, to provide a welcome entrance to the campus.

Leo A Daly published a draft Master Plan report in January 2007. The draft plan identified and prioritized major projects, allowing the College to begin programming and designing critical projects to meet the funding schedule established by Proposition A & AA.

The Future

The Master Plan provides a rational, yet flexible, framework for the optimum, long-term development of the campus.

While changes and new ideas are expected and encouraged as the Master Plan is implemented, every effort should be made to protect the integrity and spirit of the Master Plan.

As the Master Plan is implemented, the College will witness a blossoming of new energy and vitality on the campus as students gather and interact in the new landscaped areas and Arroyo. Hopefully, nearby residents will begin to express more pride in the campus and respond to the improved edge conditions for the campus.

The improved Mass Transit Center near the existing campus will encourage more students, visitors, faculty and staff to arrive at the campus via public transportation, alleviating traffic and parking problems and adding to the “green” character of the campus.

As new buildings such as the Child Development Center, Health, P.E, and Fitness Center, Family & Consumer Studies, and Media Arts are constructed, the college will, for the first time in its history, bring all disciplines together in a complete and improved campus environment. Learning spaces and social gathering places will be inviting and inspirational, and it is anticipated that this all-inclusive learning community will foster collegiality, excellence and encourage broader student participation.

Implementing the Master Plan will be challenging and rewarding. Los Angeles Mission College stands on the threshold of a new era, an era during which its mission of providing “the success of our students” for everyone in the community will become a reality.

PRESIDENT'S MESSAGE

Welcome to the promising and exciting future of Los Angeles Mission College! Our campus master plan is the result of a collaborative effort among members of our local community, neighbors and elected officials, faculty, staff and students. This current master plan has evolved over several years and is a blending of the thoughtful work of years past and the challenge of a campus built on a 22-acre parcel of land that is bounded by a residential neighborhood, a golf course and park. In our recent past, Los Angeles Mission College officials explored the possibility of expanding the campus into the adjacent El Cariso Park. A conceptual plan was developed to build new buildings and a parking structure on an 11-acre parcel of park land that would allow the campus to expand in a contiguous manner. When it was determined that the acquisition of the park land was infeasible, the College and the Los Angeles Community College District entered negotiations to acquire two vacant parcels of land in close proximity to the main campus. The parcels are approximately 0.3 miles along a shaded sidewalk leading alongside the golf course to a beautifully situated lot with sweeping mountain views. The first new academic building to occupy this extension of our college campus will be the Health, Physical Education and Fitness building scheduled to begin construction in mid-2007. We truly believe our extended campus model will prove to be a valuable asset to the College and the neighboring community. Together with future development of our main campus, Los Angeles Mission College will be well positioned to meet the growing educational needs of the residents of the northeast San Fernando Valley in a quality educational environment. Within the next few years our students will be served by one of the most modern and dynamic community colleges in Los Angeles County and the state of California. Our Mission Is Your Success!

Sincerely,



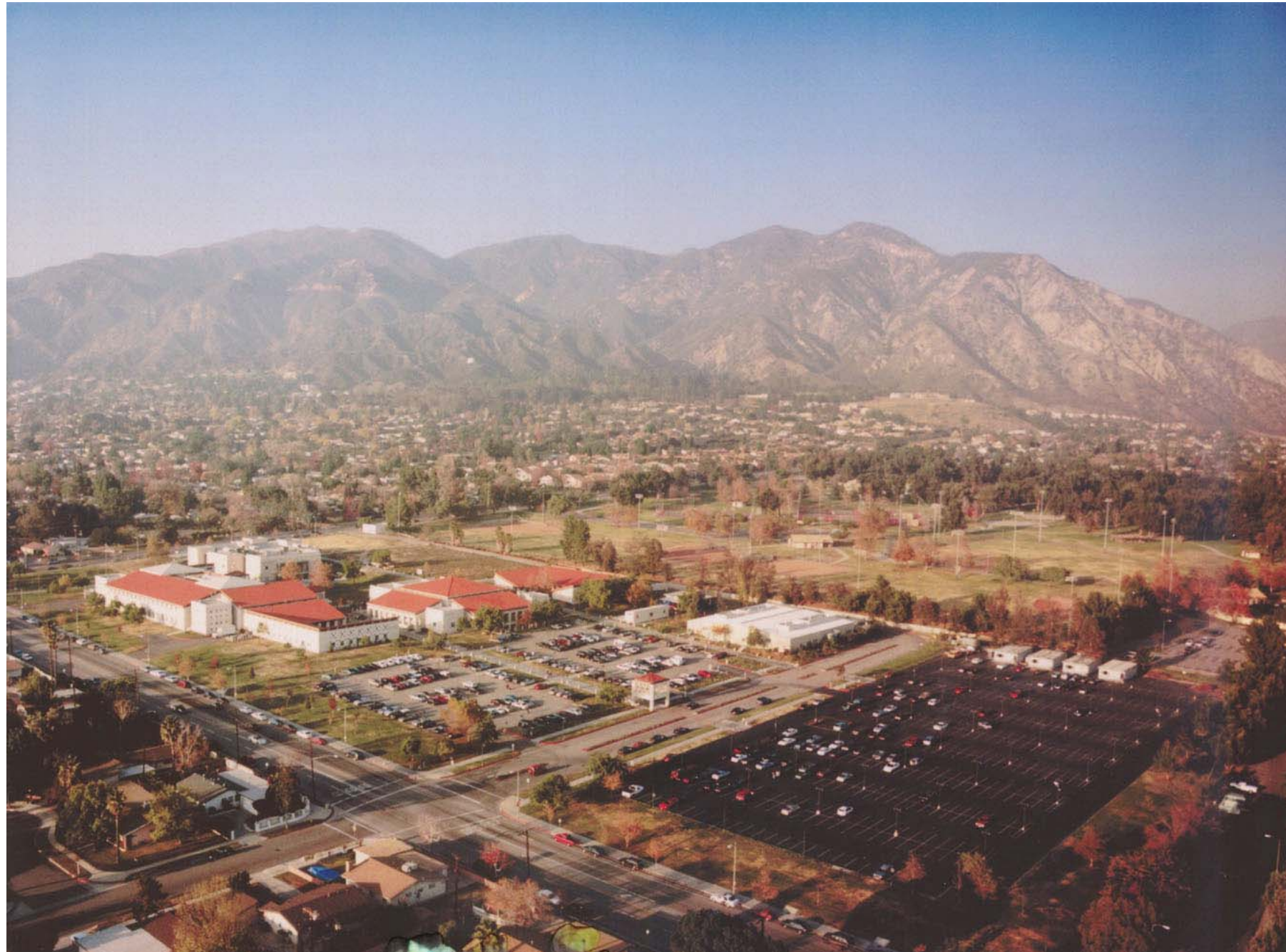
Ernest H. Moreno



Ernest H. Moreno
President, Los Angeles Mission College



COLLEGE MISSION, VISION, VALUES, & THEME



College Mission Statement

The mission of Los Angeles Mission College is the success of our students. To facilitate their success, Los Angeles Mission College provides accessible affordable, high quality learning opportunities in a culturally and intellectually supportive environment by:

- Encouraging students to become critical thinkers and lifelong learners;
- Ensuring that students successfully transfer to four-year institutions, find meaningful employment, improve their basic skills, and enrich their lives through continuing community education
- providing services and programs that improve the life of its immediate community.

College Vision

Los Angeles Mission College will provide high quality learning opportunities in an atmosphere that respects and assists all people in pursuit of their educational goals. Modes of instruction will match the changing needs of students in acquiring knowledge and skills necessary for success in the academic and work place environments. The College will support a strong work ethic, student and staff learning, and personal growth as lifelong endeavors. The College will practice an honest, collegial, and inclusive decision-making process that respects the diversity and interdependence of the College, student body, and the community we are privileged to serve.

College Values

1. We value *lifelong learning* by students and staff in a supportive environment.
2. We value *hard work* by students and employees.
3. We value *excellence* in the high standards we set for our students in and out of the classroom and in the high standards we set for the services we provide to enhance student learning.
4. We value *diversity* in the composition of our work force and student body, in the learning styles and prior experiences our students possess, in the learning experiences we introduce to students, and in the ideas we encourage students and faculty to explore.
5. We value *honesty, fairness, collegiality* and *respect* in all our interactions with each other.
6. We value a *sense of community* and commit ourselves to continual, respectful interaction with the internal and external constituencies we serve.

College Theme

"Our Mission is Your Success"