



Welcome to The Weekend College!

You are enrolled in:

Psychology 41 (7905) (UC: CSU) 3 Units

Lifespan Psychology

An introduction to human development from infancy through old age, including basic psychological processes, emotional and social development as well as adjustments related to each phase of the life cycle. Special emphasis is given to social and cultural influences.

Instructor
Eileen Roth, M.A.
(818) 364-7600, ext. 7153
psychprof94@hotmail.com

Office Hours
Wednesday, 1:00 PM – 8:00 PM

The Weekend College classes combine video lessons with online activities and weekend class meetings. You should complete all three components to successfully pass the class. The course requirements are in the online syllabus. If you have questions contact your instructor via email or by telephone during their office hours listed above.

Getting Started

Even though you do not meet with your instructor until the weekend, your class begins online on October 22, 2007. Follow the checklist below to get started in your class now.

1. Choose a Campus

Select the campus to attend your weekend class and make note of its time and location. Directions and maps to the campuses can be found at: www.laccd.edu/our_colleges/.

2. Buy Your Books

The back of this page lists the required and recommend books for your course. Buy your books as soon as possible so that you can get started on your assigned readings. Textbooks can be purchased at City, Southwest, Mission, Valley, and Pierce Colleges or from most online bookstores.

3. Log In

The class website opens **Oct. 22**, log in and read your course syllabus. It will list all assignments and quizzes times and due dates. You can find log-in instructions on the last page of this letter.

4. Email Your Instructor

Once you have logged in, email your instructor and let her know that you have successfully logged in to the class website.

5. Plan Your Schedule

Weekend College courses are fast paced—covering a lot of material in a short period of time. At a minimum, you can expect to spend 10 to 12 hours per week completing the assignments. Schedule time in advance for reading the textbooks, watching the video episodes, and completing the online assignments. If you plan to watch or record the videos on the educational cable channel LA 36, also note those times and set your Tivo or DVD recorder in advance. You can find the broadcast schedule on the back of this page.

Classroom Location Schedule

Attend class at any one of the four campuses: L.A. City, L.A. Pierce, L.A. Southwest or L.A. Valley College. The instructor teaches at all four locations.

Day	Campus	Time	Location
Saturday	L.A. Southwest	9:00 A.M. – 12:00 Noon	Lecture Lab., Rm. 105
	L.A. City College	1:30 P.M. – 4:30 P.M.	DaVinci Hall, Rm. 308
Sunday	L.A. Valley College	9:00 A.M. – 12:00 Noon	Foreign Language Bldg., Rm. 108
	L.A. Pierce College	1:30 P.M. – 4:30 P.M.	Business Bldg., Rm. 3206

Attendance at the class meetings is expected.
If you fail to attend, you may be dropped from class.

Fall 2007 CALENDAR

October 22 – December 16, 2007

Important Dates and Deadlines

Last Day to Add classes by STEP or Online	Oct. 21
Session B Begins.....	Oct. 22
Last Day to Drop or Change Classes	Oct.27
<i>(without Incurring Fees)</i>	
Last Day to ADD by FAX or in-person.....	Nov. 1
Cablecasts Begin on Cable Channel LA 36	Nov. 2
Last Day to Drop Classes Without a "W"	Nov. 7
<i>(no refund)</i>	
Last Day to File for Credit/No Credit	Nov. 14
Last Day to Drop with a "W".	Dec. 2
<i>(After this date a grade must be issued)</i>	

Class Meeting Schedule

Class Meeting	Oct. 27 & 28
Class Meeting	Nov. 3 & 4
Class Meeting	Nov. 10 & 11
Midterm Exams	Nov. 17 & 18
Class Meeting	Nov. 24 & 25
Class Meeting	Dec. 1 & 2
Class Meeting	Dec. 8 & 9
Final Exams.....	Dec. 15 & 16

A photo ID is required to take exams.

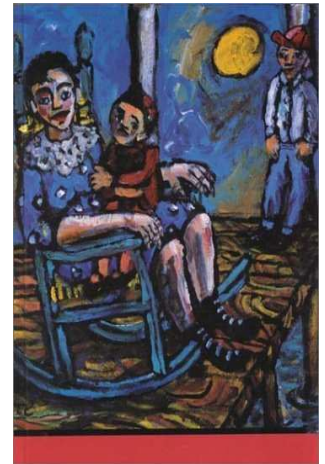
Textbooks

Required:

Title:	The Developing Person Through the Life Span
Author:	Berger, Kathleen Stassen
Edition:	6/E, 2005
Publisher:	St. Martin's
ISBN:	0-7167-9159-5

Recommended:

Title:	Telecourse Study Guide for The Developing Person Through the Life Span
Edition:	6/E, 2005
Author:	Berger, Kathleen Stassen
Publisher:	St. Martin's
ISBN:	0-7167-0335-1



Textbooks are available in the college libraries. Most libraries have the texts on Reserve, (two hour use, in the library) some libraries have copies in the General Collection. Individual Library Policies apply and they may be different at each campus. Generally, students must have a valid student ID *for the campus they intend to use*, to check out or use library materials. For example, to check out books from Pierce College Library students must have a valid Pierce College Student ID. Students who enrolled only in ITV classes may obtain a Mission College ID through the Admissions Office at Mission College.

Videos

Transitions Throughout the Life Span

Four Ways to Watch the Videos

1. Available on the Los Angeles Educational Channel, LA 36. The broadcast schedule is:
Fridays, Nov.2 – Dec.14 @ 8:00 AM – 10:00 AM
2. Purchase a complete set of the DVD's from the L.A. Pierce College Bookstore:
www.piercebookstore.com or 818-347-0313
3. Watch the video lessons at the Learning Resource Centers at City, Pierce, Southwest, Valley, and Mission Colleges. You must bring your fee receipt to view the videos.
4. Available in Broadband at: www.lamission.edu/ITV

Dear Student,

Welcome to Psychology 41—Lifespan Development! This course involves the study of human development from conception through old age, death, and dying. It is also commonly referred to as “womb to tomb” psychology. Throughout the semester we will be examining human development relative to four domains---biological, cognitive, social, and psychological/emotional---relative to the major perspectives of psychology.

We will be using a chronological approach beginning with prenatal development through old age, death and dying. If you have taken a prior child/adolescent development course you will begin with a solid foundation. However, we will examine the information as though you have not taken a previous developmental psychology course—so for first-timers—there is no need to worry!

I encourage you to log into our course website and read through the course syllabus. Directions are on page four. In addition, the faster you purchase your text and copy of the DVD, the sooner that you will be set to start. You should be able to do well in the course if you choose to purchase the previous edition of the text---you might get a better deal in terms of price.

Once you have read this letter, please post your first discussion topic---your introduction to the class. You can find this under the discussion and private messages link. Full details are listed on the syllabus under course requirements.

I look forward to seeing of you at our first class meeting, October 27 or 28th. Remember you can come to any of the class locations listed, Southwest on Saturday morning, or City on Saturday afternoon, Valley on Sunday morning or Pierce on Sunday afternoon. The times and room numbers can be found on the first page.

A majority of my students do well in this course receiving grades of an A or B – I’m hoping that you will be one of them!

Sincerely,

Eileen Roth, M.A.
Instructor, Psychology 41

-OVER-

Online Class Website

Step 1. Where do I go to log on to this course?

- Go to <http://etudes-ng.fhda.edu/portal>
- Bookmark this page!
- Enter your user ID

Step 2. What is my User ID?

In lowercase letters and with no spaces:

- use the first 2 letters of your first name
- *and* the first 2 letters of your last name
- *and* the last 5-digits of your student ID #

Example: Donna Smith:

Student ID #: 88 455 6789

User ID:

My User ID is: _____

Step 3. What is my Password?

Using four numbers together with no spaces:

- use two numbers for your birth month
- *and* use two numbers for the birth day

Example: if your birth date was January 3

Password:

My Password is: _____

Once you have logged in you will see two sections on the top left of the page, My Workspace and on the right, your class website. Your class website begins with LAMCITYV. Click on the tab to enter the course. See the example below:



E-mail your instructor once you have successfully logged in to the course website.

NOTE TO AOL USERS: Launch either an Internet Explorer or a Netscape browser after you connect using AOL and minimize the AOL Browser. DO NOT USE THE AOL BROWSER.

Add/Drop Classes & Check Grades

Forms for adding/dropping a class or requesting an official transcript can be found at www.lamission.edu/itv. These forms can be faxed to (818) 833-3598 or brought in to our office.

To Add/Drop a class and check Official Grades online, visit www.laccd.edu.

To Add/Drop classes through the Student Telephone Enrollment Process (STEP):

1. Call (213) 689-8888 or (310) 605-0505 or (323) 226-1999 or (818) 988-2222
2. Press 0 for ITV/The Weekend College
3. Follow the instructions to complete your request

We're here to Help

If you need technical assistance logging in to your course, contact ITV Technical Support at (818) 833-3596 or send an email to mckennpg@lamission.edu. Be sure to include:

- Your full name
- Course title and instructor
- Student ID
- Your phone and e-mail address
- Date enrolled